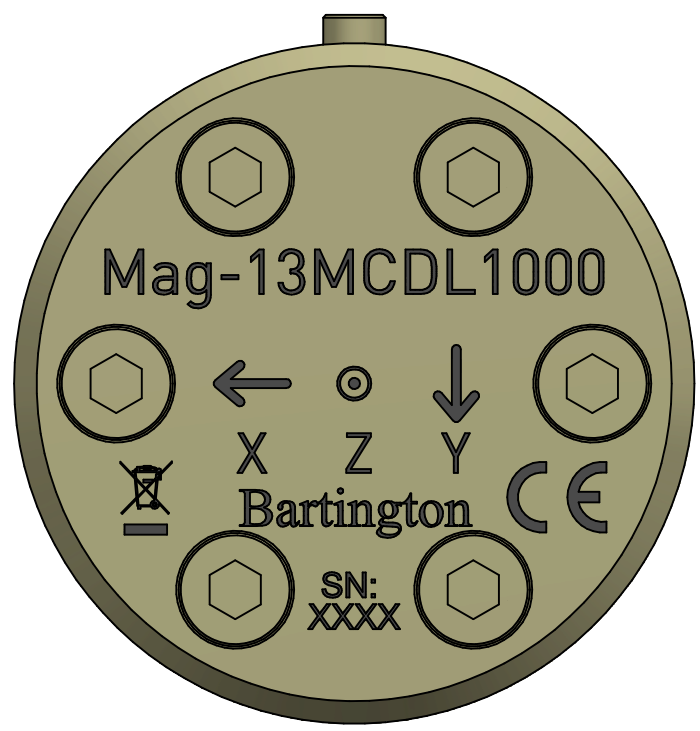


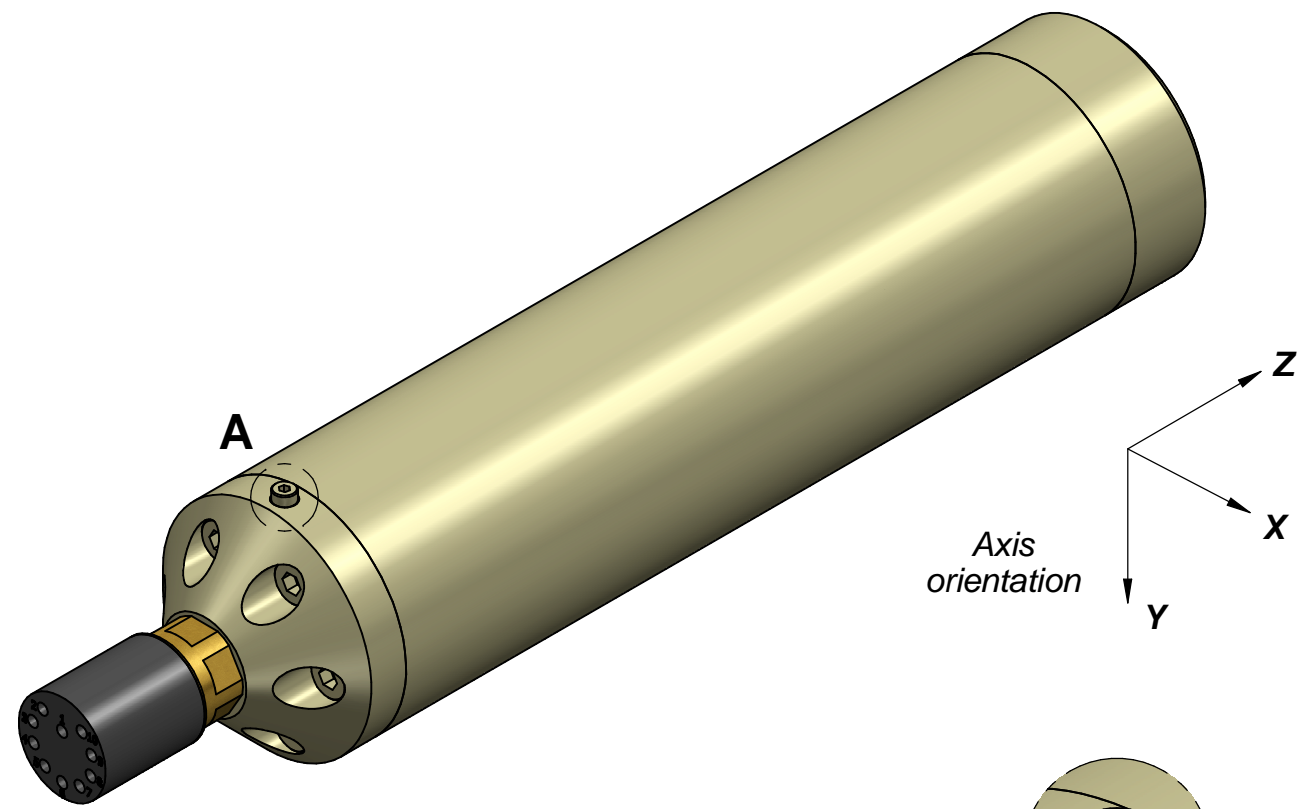
1 2 3 4 5 6 7 8

A  
B  
C  
D  
E  
F

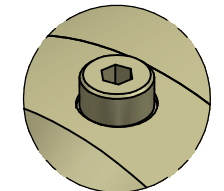


**Subconn MCBH10F**

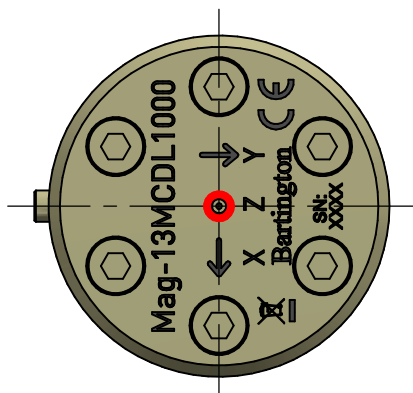
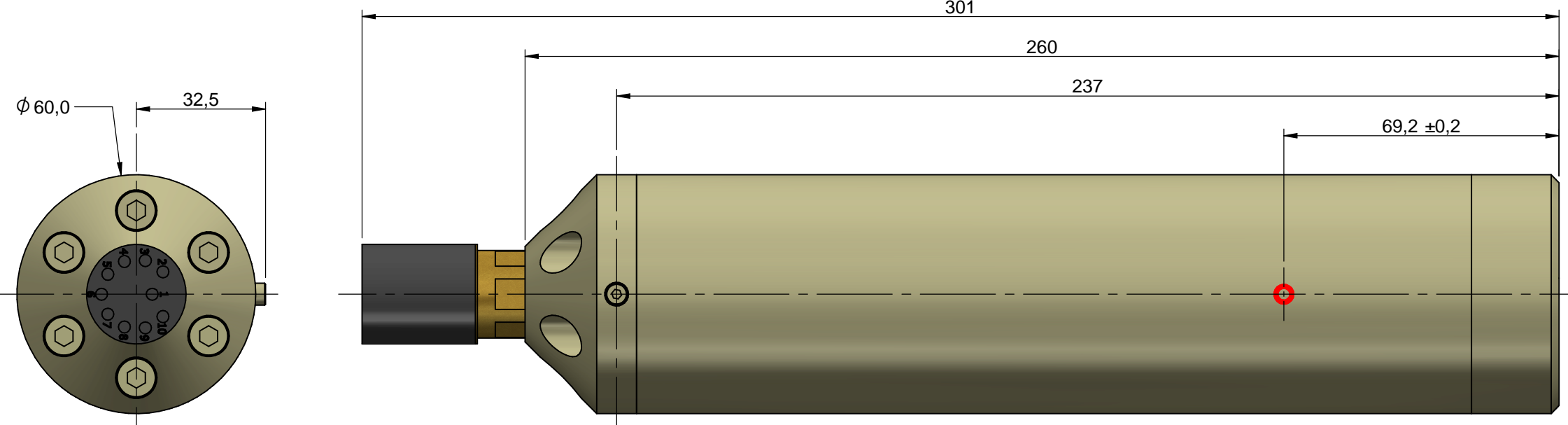
Pin No.	Function
1	X+
2	Y+
3	Z+
4	PGND
5	SGND
6	V+
7	V-
8	TEST
9	N.C.
10	SCREEN



Laser marking determined by product type.  
Axis marking does not show the true position  
of sensors.



**Detail A**  
(Removable M3 screw)



Connector angular position  
will vary

● Centre of sensing elements



THIS DOCUMENT AND THE INFORMATION CONTAINED IN IT IS  
COMMERCIAL IN CONFIDENCE AND © BARTINGTON  
INSTRUMENTS LTD AND/OR ITS LICENSORS. NEITHER MAY BE  
REPRODUCED, COPIED OR TRANSMITTED TO ANY THIRD PARTY,  
IN EACH CASE IN ANY MEDIUM, WITHOUT THE PRIOR WRITTEN  
PERMISSION OF BARTINGTON INSTRUMENTS LTD.

Title		Third Angle Projection	Project
<b>Mag-13MCD Outline Drawing</b>			<b>D1309</b>
Revisions		Dimensions in mm	Size A3
New style laser marking. Pin 9 changed to "N.C."		Created by	Sheet 1/1
		Modified by	31/03/2014
		Approved by	11/07/2019
		Drawing No.	Issue
		<b>DR3531</b>	4
			DCN No.
			<b>1829</b>

Enclosure Material: PEEK 450g

1 2 3 4 5 6 7 8

BI OUTLINE DRAFT A3 v9