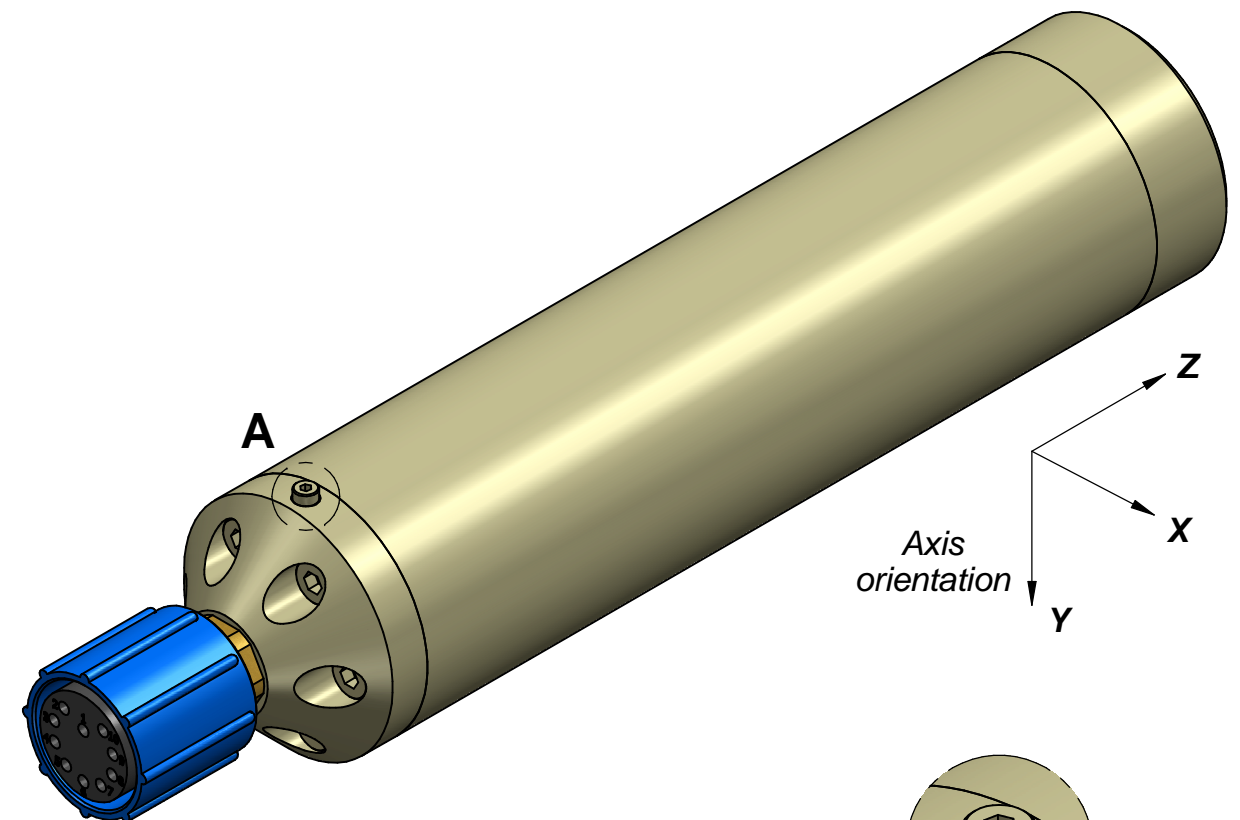
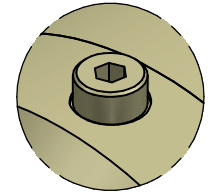


Subconn MCBH10F

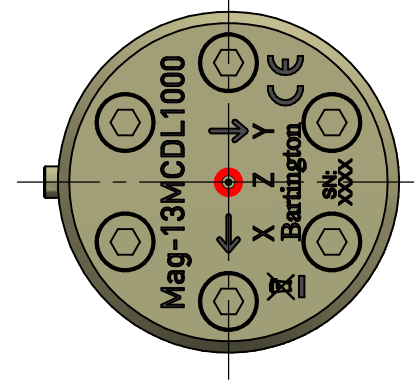
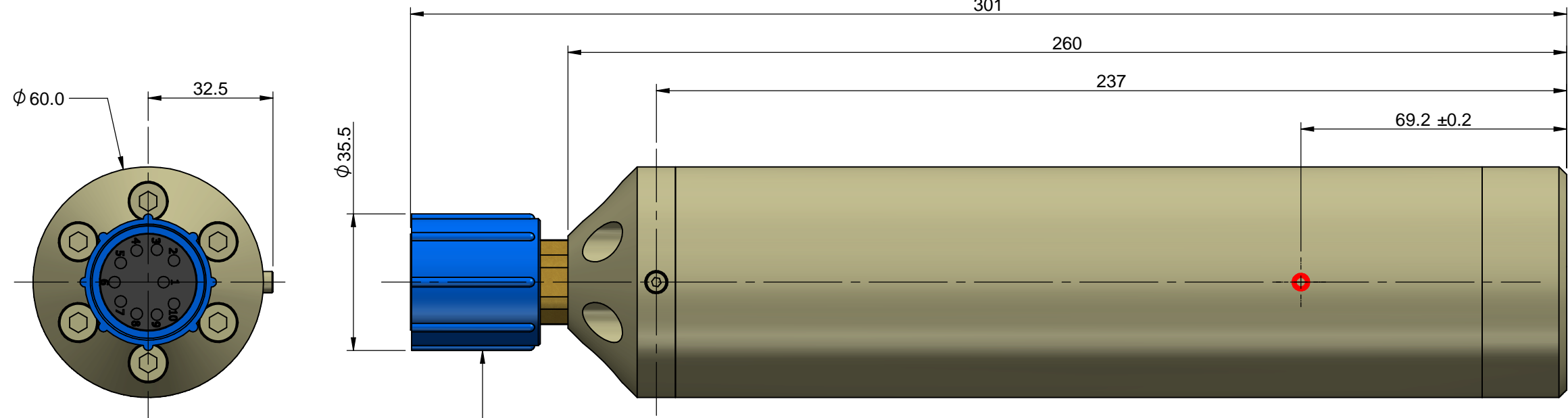
Pin No.	Function
1	X+
2	Y+
3	Z+
4	PGND
5	SGND
6	V+
7	V-
8	TEST
9	N.C.
10	SCREEN



Laser marking determined by product type.
Axis marking does not show the true position
of sensors.



Detail A
(Removable M3 screw)



● Centre of sensing elements

Connector angular position
will vary

Subconn DSLA-F
locking sleeve

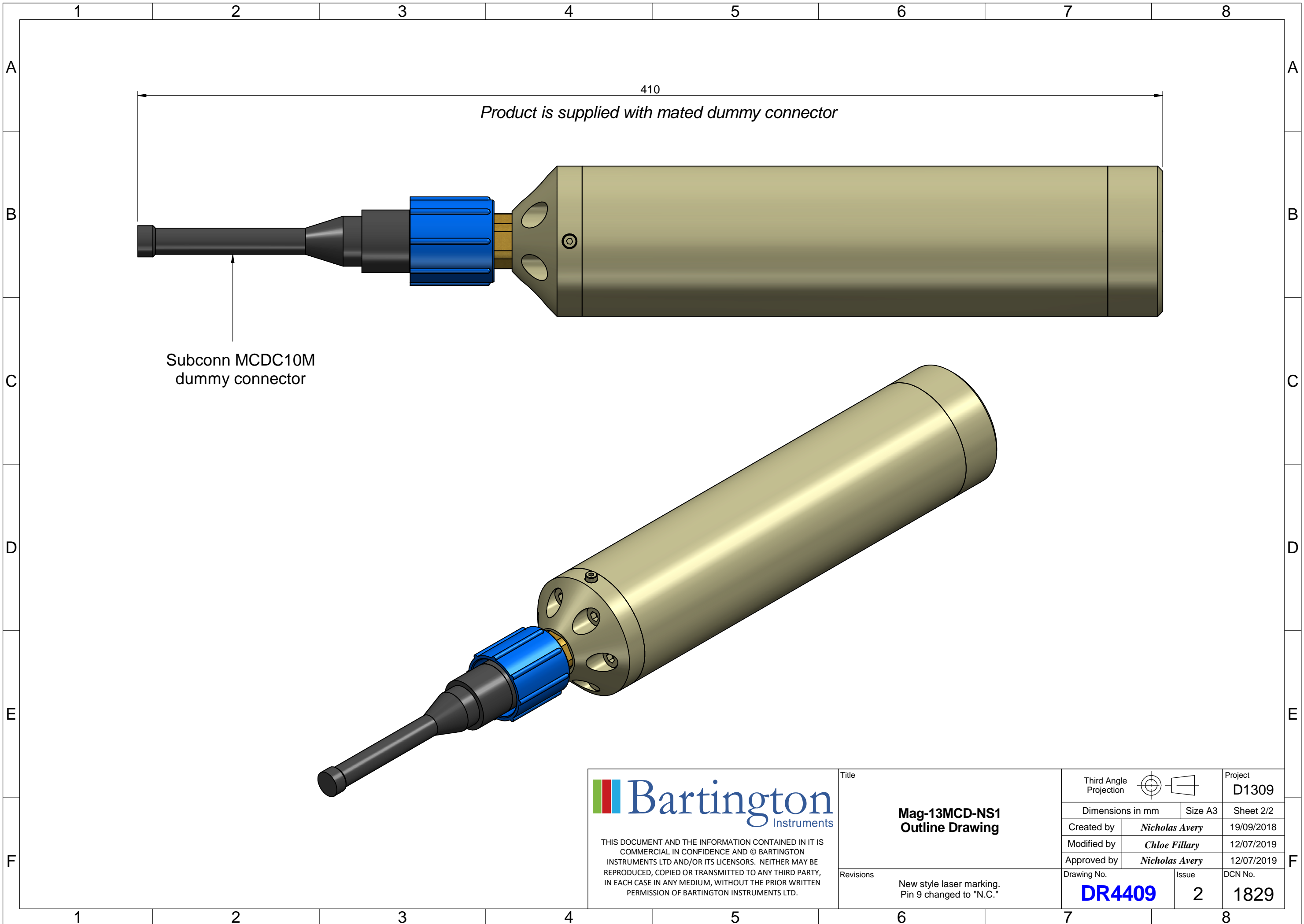
Enclosure Material: PEEK 450g



THIS DOCUMENT AND THE INFORMATION CONTAINED IN IT IS
COMMERCIAL IN CONFIDENCE AND © BARTINGTON
INSTRUMENTS LTD AND/OR ITS LICENSORS. NEITHER MAY BE
REPRODUCED, COPIED OR TRANSMITTED TO ANY THIRD PARTY,
IN EACH CASE IN ANY MEDIUM, WITHOUT THE PRIOR WRITTEN
PERMISSION OF BARTINGTON INSTRUMENTS LTD.

Title		Third Angle Projection	Project
Mag-13MCD-NS1 Outline Drawing		Dimensions in mm	D1309
		Size A3	Sheet 1/2
Created by	Nicholas Avery	19/09/2018	
Modified by	Chloe Fillary	12/07/2019	
Approved by	Nicholas Avery	12/07/2019	
Revisions		Drawing No.	Issue
New style laser marking. Pin 9 changed to "N.C."		DR4409	2
		DCN No.	1829

BI OUTLINE DRAFT A3 v9



Product is supplied with mated dummy connector

Subconn MCDC10M
dummy connector



THIS DOCUMENT AND THE INFORMATION CONTAINED IN IT IS COMMERCIAL IN CONFIDENCE AND © BARTINGTON INSTRUMENTS LTD AND/OR ITS LICENSORS. NEITHER MAY BE REPRODUCED, COPIED OR TRANSMITTED TO ANY THIRD PARTY, IN EACH CASE IN ANY MEDIUM, WITHOUT THE PRIOR WRITTEN PERMISSION OF BARTINGTON INSTRUMENTS LTD.

Title
**Mag-13MCD-NS1
Outline Drawing**

Revisions
New style laser marking.
Pin 9 changed to "N.C."

Third Angle Projection

Dimensions in mm

Created by *Nicholas Avery*

Modified by *Chloe Fillary*

Approved by *Nicholas Avery*

Drawing No.
DR4409

Issue
2

Project
D1309

Size A3
Sheet 2/2

19/09/2018

12/07/2019

12/07/2019

DCN No.
1829

BI OUTLINE DRAFT A3 v9