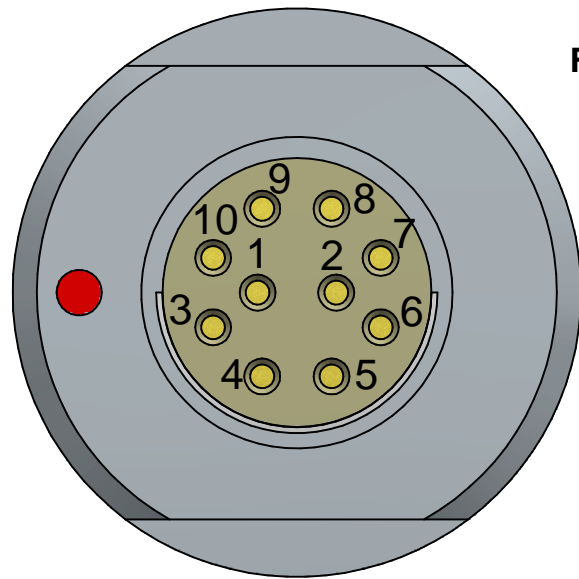


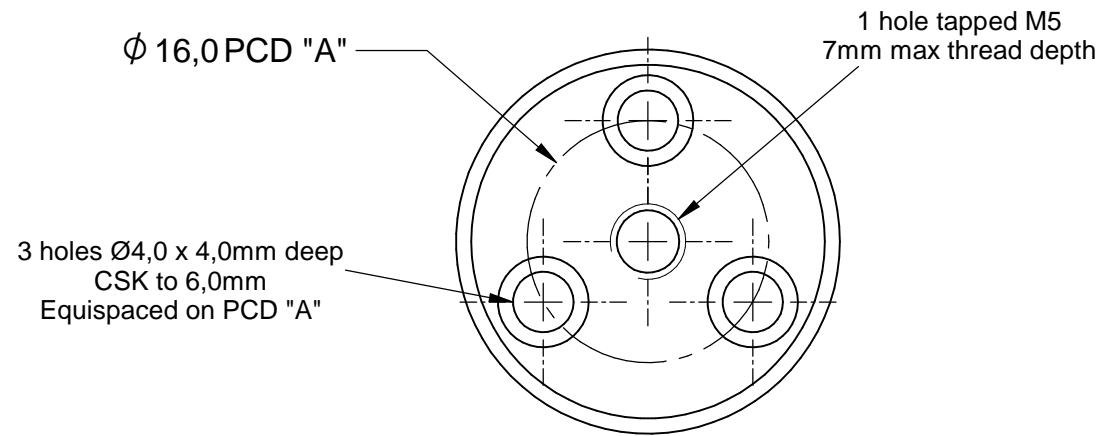
Fischer: AL1731-DEU-1031-A010SR11-11G12



Viewed from mating face

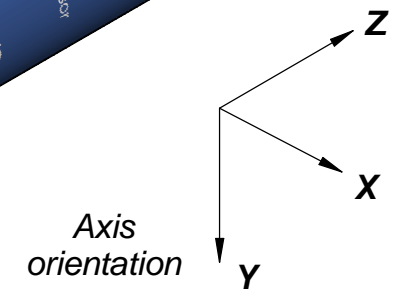
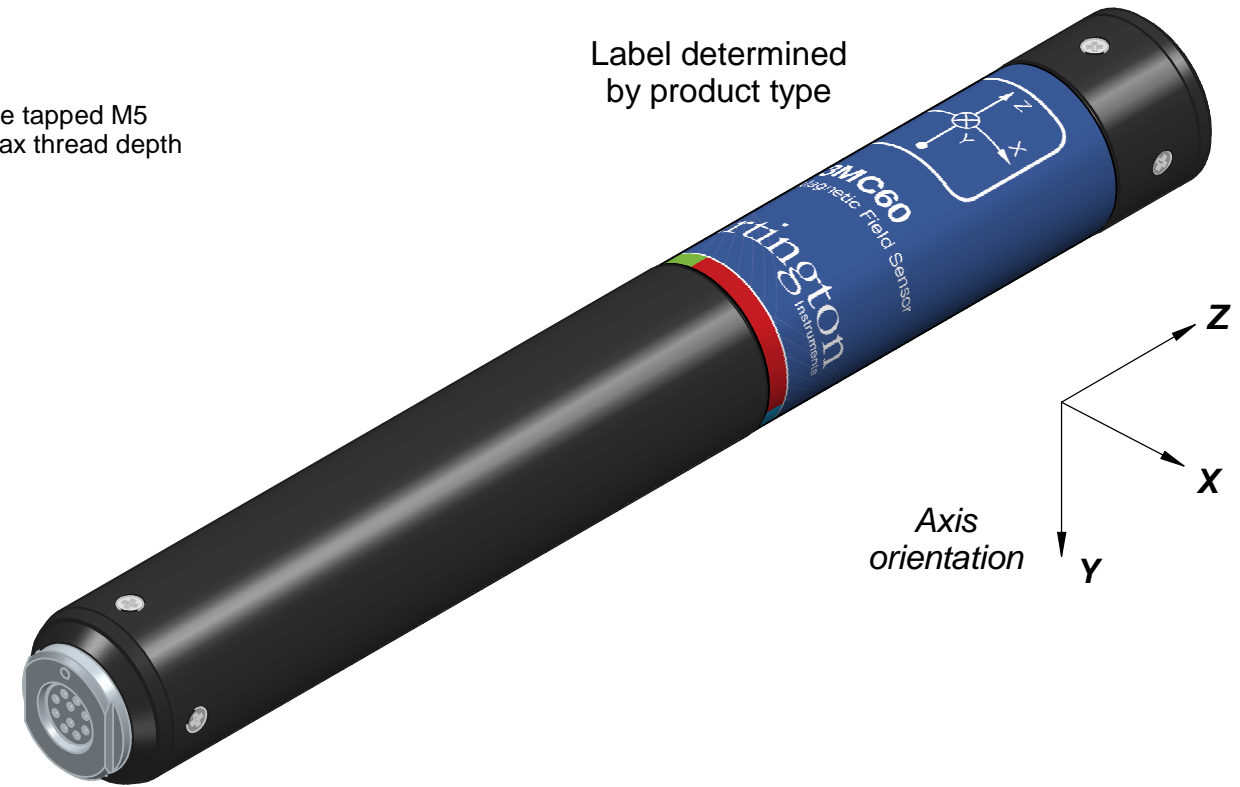
Pin No.	Function
1	X+
2	Y+
3	Z+
4	PGND
5	SGND
6	V+
7	V-
8	TEST
9	N.C.
10	N.C.

End cap mounting points



Note:
Cable must be supported if using end cap mounting points

Label determined by product type

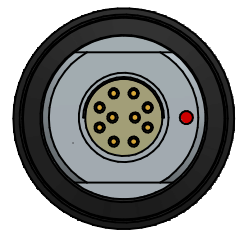


203

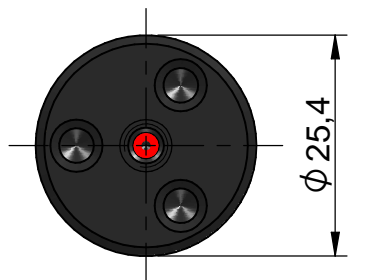
200

34,0 ±0,2

● Centre of sensing elements



Connector angular position will vary



THIS DOCUMENT AND THE INFORMATION CONTAINED IN IT IS COMMERCIAL IN CONFIDENCE AND © BARTINGTON INSTRUMENTS LTD AND/OR ITS LICENSORS. NEITHER MAY BE REPRODUCED, COPIED OR TRANSMITTED TO ANY THIRD PARTY, IN EACH CASE IN ANY MEDIUM, WITHOUT THE PRIOR WRITTEN PERMISSION OF BARTINGTON INSTRUMENTS LTD.

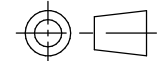
Title

**Mag-13
Outline Drawing**

Revisions

New style label artwork.
Pin 9 changed to "N.C."

Third Angle Projection



Project
D1309

Dimensions in mm

Size A3

Sheet 1/1

Created by

M Khaled

31/10/2013

Modified by

Chloe Fillary

10/07/2019

Approved by

Nicholas Avery

10/07/2019

Drawing No.

DR3357

Issue

8

DCN No.

1829