

# DEVICE CONNECTION INFORMATION

## 1.1 Hirose RM15TRD-10(71) Connection Table

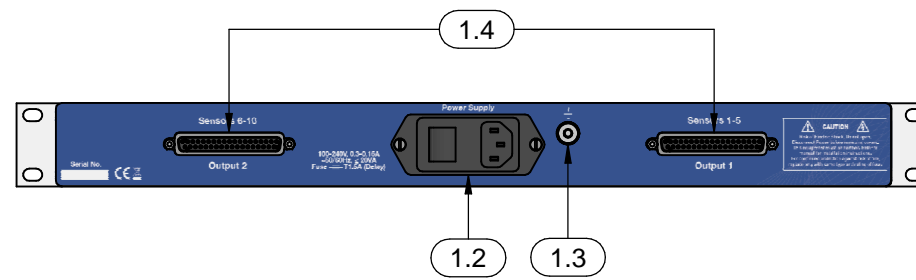
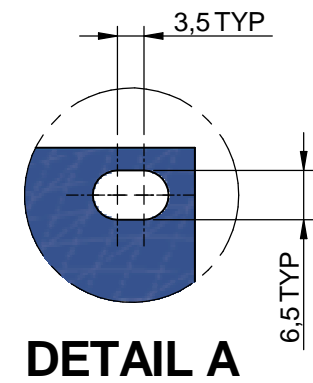
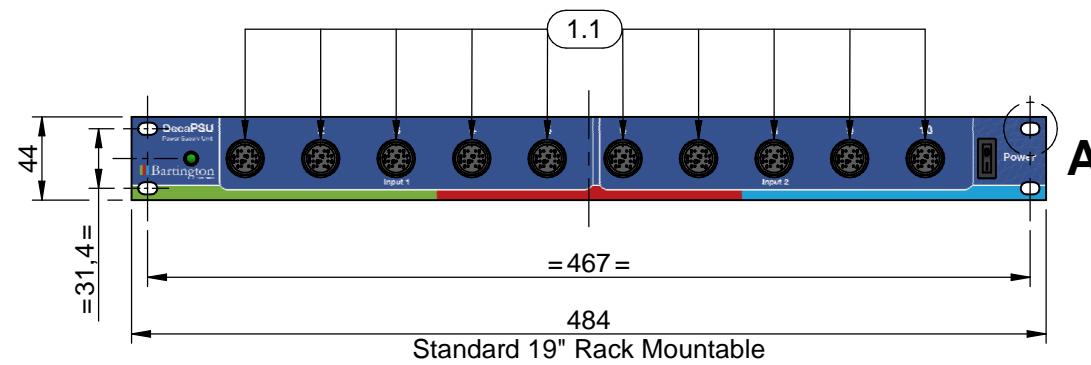
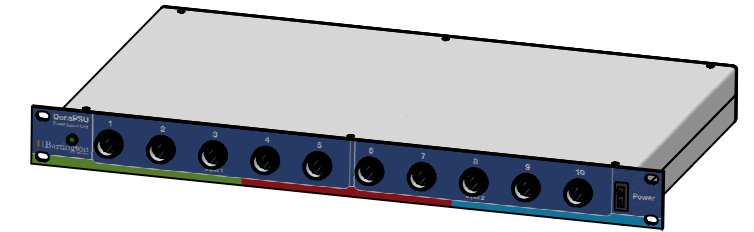
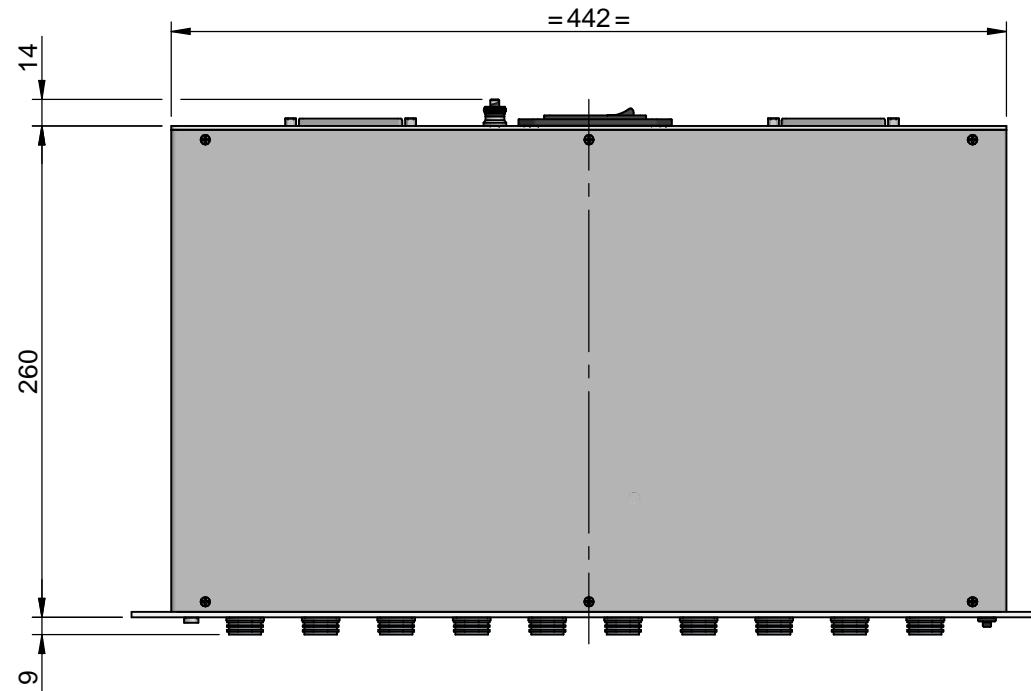
Pin Number	Function
1	X Axis Positive Sig
2	Y Axis Positive Sig
3	Z Axis Positive Sig
4	GND
5	Test
6	Positive PWR
7	Negative PWR
8	X Axis Negative Sig
9	Y Axis Negative Sig
10	Z Axis Negative Sig

## 1.2 IEC Mains Connection See OM2201 for further information

## 1.3 Grounding Stud See OM2201 for further information

## 1.4 D Sub Connector, 37 Contacts, Receptacle Connection Table

Pin Number	Function
1	Sensor 1 or 6 – Test Activation
2	Sensor 1 or 6 – Z
3	Sensor 1 or 6 – X
4	Sensor 2 or 7 – Ground
5	Sensor 2 or 7 – Y
6	Sensor 3 or 8 – Test Activation
7	Sensor 3 or 8 – Z
8	Sensor 3 or 8 – X
9	Sensor 4 or 9 – Ground
10	Sensor 4 or 9 – Y
11	Sensor 5 or 10 – Test Activation
12	Sensor 5 or 10 – Z
13	Sensor 5 or 10 – X
14	N.C.
15	N.C.
16	Ground (for test activation)
17	N.C.
18	N.C.
19	N.C.
20	Sensor 1 or 6 – Ground
21	Sensor 1 or 6 – Y
22	Sensor 2 or 7 – Test Activation
23	Sensor 2 or 7 – Z
24	Sensor 2 or 7 – X
25	Sensor 3 or 8 – Ground
26	Sensor 3 or 8 – Y
27	Sensor 4 or 9 – Test Activation
28	Sensor 4 or 9 – Z
29	Sensor 4 or 9 – X
30	Sensor 5 or 10 – Ground
31	Sensor 5 or 10 – Y
32	N.C.
33	N.C.
34	N.C.
35	Sensor 1 to 5 (or 6 to 10) Group Test Activation
36	N.C.
37	N.C.



THIS DOCUMENT AND THE INFORMATION CONTAINED IN IT IS COMMERCIAL IN CONFIDENCE AND © BARTINGTON INSTRUMENTS LTD AND/OR ITS LICENSORS. NEITHER MAY BE REPRODUCED, COPIED OR TRANSMITTED TO ANY THIRD PARTY, IN EACH CASE IN ANY MEDIUM, WITHOUT THE PRIOR WRITTEN PERMISSION OF BARTINGTON INSTRUMENTS LTD.

Title <b>DecaPSU Outline Drawing</b>	Third Angle Projection	Project <b>D1207</b>
	Dimensions in mm	Size A3 Sheet 1/1
Revisions New style label artwork.	Created by <i>Nicholas Avery</i>	07/05/2019
	Modified by <i>Chloe Fillary</i>	31/10/2019
	Approved by <i>Nicholas Avery</i>	31/10/2019
	Drawing No. <b>DR4477</b>	Issue <b>2</b>
		DCN No. <b>1868</b>

BI OUTLINE DRAFT A3 v9