

Fischer: AL1731-DEU-1031-A010SR11-11G12
 Note: connector angular position will vary

12-Way Def Stan
 Screened Cable
 7/0,1 Conductors
 Ø4,4 nominal OD

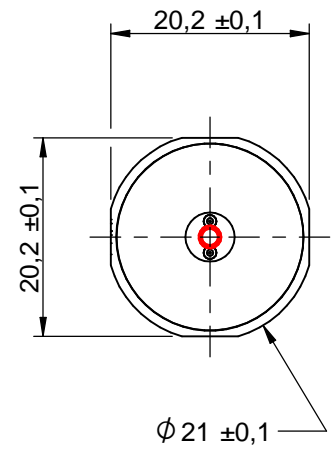
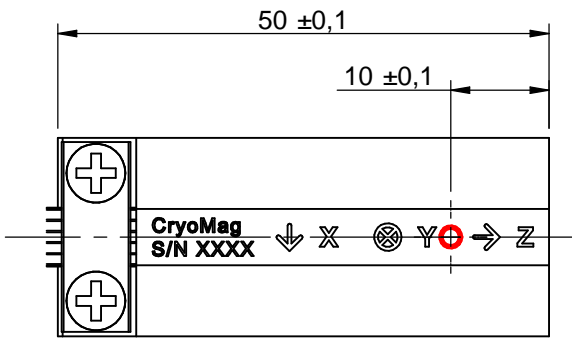
Interconnection
 PCB "PC266"

Cryogenic Loom
 Ø0,1 BeCu Wire
 Polyester Insulation (200°C Melting Pt.)

Sensor Head
 Body Material: PEEK GF30

BeCu Loom is c/w PTFE
 heatshrink and clamped at
 this location for strain relief

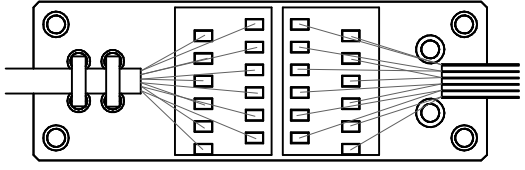
SKT1		PC266		
Pin No.	Function	Pad No.	Function	Colour
1	X+	1	X Exc	Brown
2	Y+	2	X EGND	Red
3	Z+	3	Y Exc	Orange
4	PGND	4	Y EGND	Yellow
5	SGND	5	Z Exc	Green
6	V+	6	Z EGND	Blue
7	V-	7	X Sense	Violet
8	N.C.	8	X GND	Grey
9	N.C.	9	Y Sense	White
10	N.C.	10	Y GND	Black
		11	Z Sense	Pink
		12	Z GND	Turquoise



○ Centre of sensing elements

Note: PC266 interconnection PCB is supplied with a plastic cover to protect fragile BeCu cores. The cover can be removed with a posi driver, PCB will be as shown to the right of this text.

Warning: if desoldering BeCu loom, great care must be taken to avoid mixing up the cores as they are not labelled and very difficult to differentiate once desoldered.



Bartington Instruments

THIS DOCUMENT AND THE INFORMATION CONTAINED IN IT IS COMMERCIAL IN CONFIDENCE AND © BARTINGTON INSTRUMENTS LTD AND/OR ITS LICENSORS. NEITHER MAY BE REPRODUCED, COPIED OR TRANSMITTED TO ANY THIRD PARTY, IN EACH CASE IN ANY MEDIUM, WITHOUT THE PRIOR WRITTEN PERMISSION OF BARTINGTON INSTRUMENTS LTD.

Title		Third Angle Projection	Project
CryoMag Outline Drawing			D1703
Revisions		Dimensions in mm	Size A3
12-way def stan cable changed to similar cable with smaller cores. Mounting holes added to interconnection PCB PC266. Plastic cover added to interconnection PCB to protect BeCu cores. Flats added to sensor head design.		Created by	Sheet 1/1
		Modified by	30/04/2019
		Approved by	24/09/2020
		Drawing No.	Issue
		DR4476	F
		DCN No.	TBC

BI OUTLINE DRAFT A3 v9