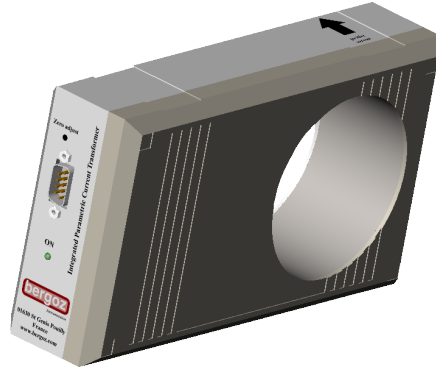


# Comparison IPCT / LP-IPCT

## IPCT



### Dimensions

- 200 x 112 x 50 mm
- ID 82 mm
- Mass 0.5 kg

✓ for larger cable

### Electrical performances

- Full scale from  $\pm 1\text{mA}$  to  $\pm 20\text{A}$
- Single output:
  - DC to 3.8 kHz (-3dB) bandwidth

✓ wide scale

✓ larger bandwidth

## LP-IPCT



### Dimensions

- 105 x 52 x 55 mm
- ID 30 mm
- Mass 0.2 kg

✓ more compact

### Electrical performances

- Full scale from  $\pm 1\text{mA}$  to  $\pm 2\text{A}$
- Two outputs (full and limited bandwidth):
  - DC to 1 kHz (-3dB) bandwidth
  - DC to 200 Hz (-3dB) bandwidth

✓ bandwidth choice

# Comparison IPCT / LP-IPCT

## IPCT

✓ faster

### Resolution, bandwidth and ripple

Range	Resolution (1s integr.)	Bandwidth -3 dB	Ripple (7kHz)
+ - 1 mA	1 $\mu$ A	> 150 Hz	< 80 mV rms
+ - 10 mA	10 $\mu$ A	> 800 Hz	< 70 mV rms
+ - 100 mA	10 $\mu$ A	> 3 kHz	< 70 mV rms
+ - 2 A	30 $\mu$ A	> 3.8 kHz	< 12 mV rms
+ - 20 A	200 $\mu$ A	> 2 kHz	< 12 mV rms

### Connections

Function	Pin
Power supply -15V	4
Power supply +15V	9
Power supply ground	5
Output (-10V to +10V)	2
Output ground	7
Optional external resistor	1
Optional external resistor	6
Calibration winding +	8
Calibration winding -	3

✓ with calibration winding

## LP-IPCT

✓ Better resolution

### Resolution, bandwidth and ripple

Range	Resolution (1s integr.)	<i>Full bandwidth output</i>		<i>Limited bandwidth output</i>	
		Bandwidth (-3 dB)	Ripple (7kHz)	Bandwidth (-3 dB)	Ripple (7kHz)
+ - 1 mA	1 $\mu$ A	> 50 Hz	< 80 mV rms	> 50 Hz	< 80 mV rms
+ - 10 mA	2 $\mu$ A	> 500 Hz	< 50 mV rms	> 200 Hz	< 25 mV rms
+ - 100 mA	3 $\mu$ A	> 1 kHz	< 20 mV rms	> 200 Hz	< 5 mV rms
+ - 2 A	3 $\mu$ A	> 1 kHz	< 20 mV rms	> 200 Hz	< 5 mV rms

### Connections

Function	Pin
Power supply -15V	4
Power supply +15V	9
Power supply ground	5
Full bandwidth output	2
Output ground	7
Limited bandwidth output	8