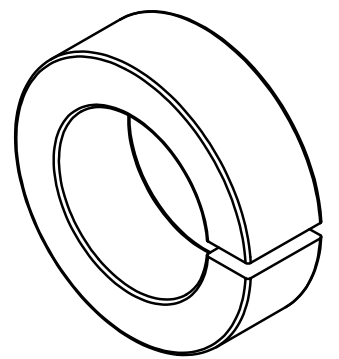
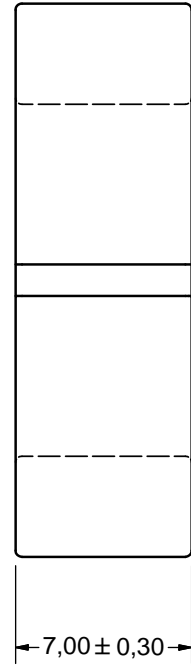
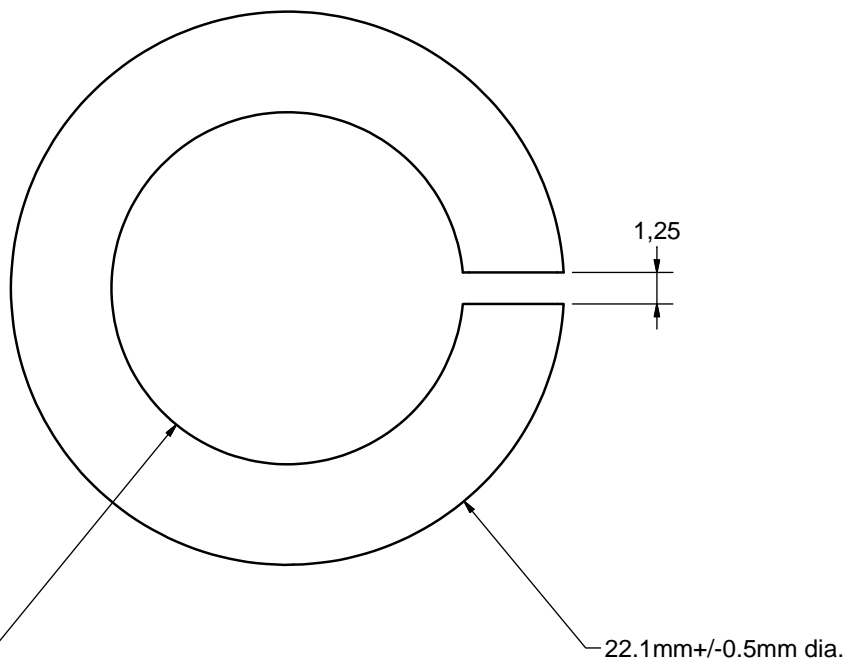


**PROPRIETARY**  
 THIS DRAWING CONTAINS CONFIDENTIAL  
 INFORMATION PROPRIETARY TO GMW INC. IT MUST  
 NOT BE REPRODUCED OR DISCLOSED TO OTHERS OR  
 USED IN ANY OTHER WAY, IN WHOLE OR IN PART  
 EXCEPT AS AUTHORIZED IN WRITING BY GMW INC.



13.7mm +/- 0.4mm dia

22.1mm +/- 0.5mm dia.

7.00 ± 0,30

1,25

Material: Type 22G  
 Source: Kolektor Magma d.o.o  
 Stegne 29, 1521 Ljubljana  
 Slovenia  
 Email: magma@kolektor.si

Kolektor Part Number:  
 T22G-22-14-7-1.25

DRAWN	Date	<b>DO NOT SCALE FROM DRAWING</b> DIMENSIONS & TOLERANCES UNLESS OTHERWISE SPECIFIED	<b>GMW Associates</b> 955 Industrial Road, San Carlos, CA 94070 Tel: (650) 802-8292. Fax: (650) 802-8298	
CHECK	Date		TITLE <b>Ferrite Core with 1.25mm gap</b> <b>22mm x 14mm x 7mm</b>	
ENGINEERING	Date		SIZE <b>A3</b>	
		FINISH 63 ✓ 1.6 ✓	DRAWING No. <b>12900-2814-0</b>	REV
		THIRD ANGLE PROJECTION 	SCALE:	WT: kg SHEET: OF: