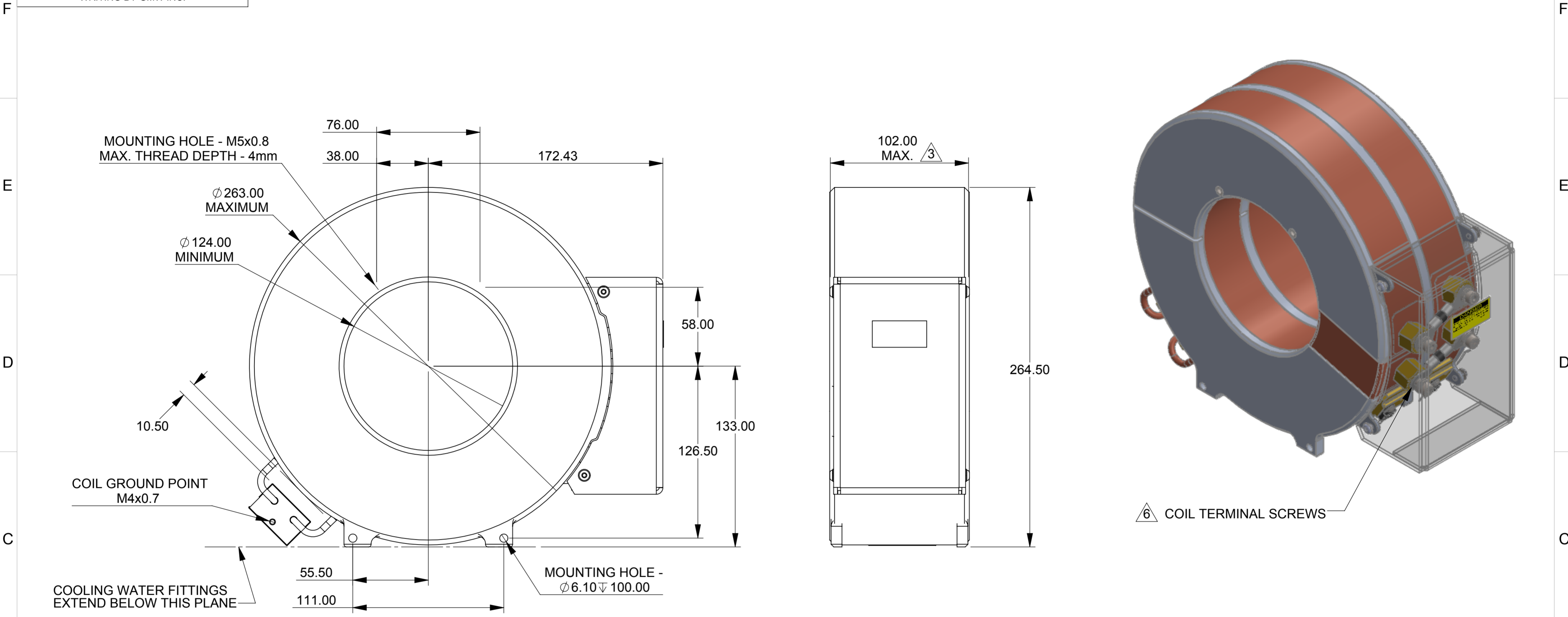


PROPRIETARY
 THIS DRAWING CONTAINS CONFIDENTIAL INFORMATION PROPRIETARY TO GMW INC. IT MUST NOT BE REPRODUCED OR DISCLOSED TO OTHERS OR USED IN ANY WAY, IN WHOLE OR IN PART EXCEPT AS AUTHORIZED IN WRITING BY GMW INC.

REVISION HISTORY			
REV.	DESCRIPTION	DATE	APPROVED
P1	Release	6 Mar, 2018	T. King



QUANTITY: 2 PER MAGNET

- NOTES:
- ENSURE WATER MANIFOLD IS PROPERLY ALIGNED PRIOR TO SOLDERING
 - SOLDER TO BE "HARRIS STAY BRIGHT #8 SILVER BEARING SOLDER", 5.5-6.0% Ag, BALANCE Sn
 - FINAL DIMENSION ACHIEVED USING "FALSE PLATE"
 - SCREW HEADS MUST NOT BE PROUD OF COIL SIDES
 - COIL TERMINAL LUG BOLTS MAXIMUM TORQUE: 4Nm [XX ft-lbs]

MATERIAL:
 ADHESIVE LAYER: PPI 38.1 x 0.125mm COPPER FOIL
 KAPTON INSULATION: 0.010mm / 0.025mm

WINDING PITCH: 0.160 - 0.165mm
 TURNS PER PANCAKE: 400
 TURNS PER COIL (PARALLEL): 400
 TURNS PER COIL (SERIES): 800

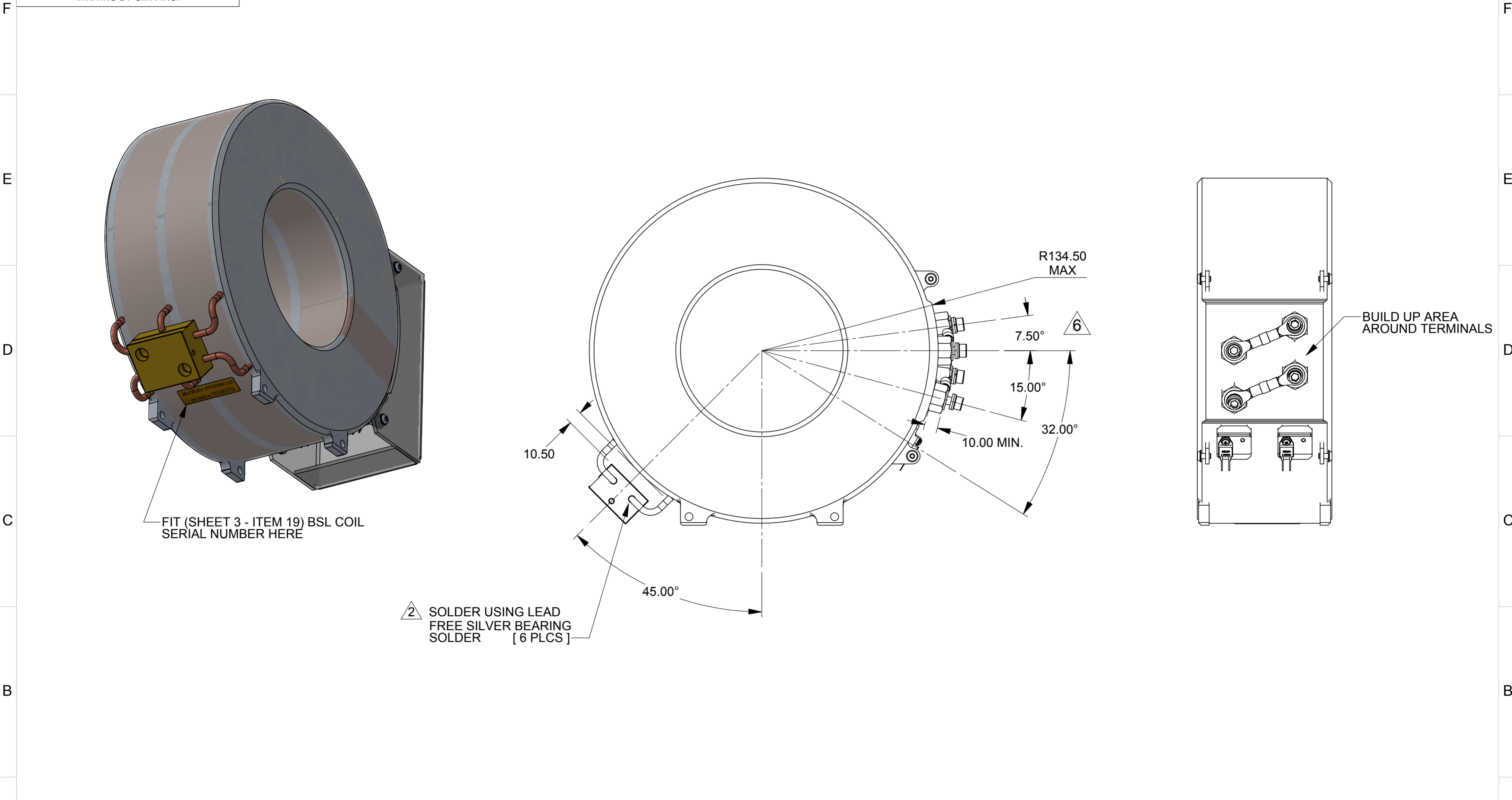
WINDING RESISTANCE: 840m Ω
 COIL RESISTANCE (PARALLEL): 420m Ω
 COIL RESISTANCE (SERIES): 1.68 Ω

DRAWN M. Duffy	DATE 15 Feb, 2018	DO NOT SCALE FROM DRAWING DIMENSIONS & TOLERANCES UNLESS OTHERWISE NOTED <table border="1"> <tr><th>LINEAR</th><th>INCHES</th><th>mm</th></tr> <tr><td>X.XXX</td><td>± 0.005</td><td>± 0.03</td></tr> <tr><td>X.XX</td><td>± 0.01</td><td>± 0.1</td></tr> <tr><td>X.X</td><td>± 0.03</td><td>± 0.3</td></tr> <tr><td>X</td><td>± 0.06</td><td>± 1</td></tr> <tr><td>DEG.</td><td>± 0.5</td><td>± 0.5</td></tr> <tr><td>FINISH</td><td>63</td><td>1.6</td></tr> </table>	LINEAR	INCHES	mm	X.XXX	± 0.005	± 0.03	X.XX	± 0.01	± 0.1	X.X	± 0.03	± 0.3	X	± 0.06	± 1	DEG.	± 0.5	± 0.5	FINISH	63	1.6	GMW Associates 955 Industrial Road, San Carlos, CA 94070 Tel: (650) 802-8292. Fax: (650) 802-8298 TITLE: 5405 - Coil Assembly Dimensions & Specifications
LINEAR	INCHES		mm																					
X.XXX	± 0.005		± 0.03																					
X.XX	± 0.01	± 0.1																						
X.X	± 0.03	± 0.3																						
X	± 0.06	± 1																						
DEG.	± 0.5	± 0.5																						
FINISH	63	1.6																						
CHECKED T. King	DATE 6 Mar, 2018	SIZE A2	DWG NO. 11907-0451-0	REV. P1																				
ENGINEERING	DATE	SCALE: 1:2	MASS: 31.5 kg	SHEET: 1 OF 3																				

8 7 6 5 4 3 2 1

PROPRIETARY
 THIS DRAWING CONTAINS CONFIDENTIAL INFORMATION PROPRIETARY TO GMW INC. IT MUST NOT BE REPRODUCED OR DISCLOSED TO OTHERS OR USED IN ANY WAY, IN WHOLE OR IN PART EXCEPT AS AUTHORIZED IN WRITING BY GMW INC.

REVISION HISTORY			
REV.	DESCRIPTION	DATE	APPROVED
P1	Release	6 Mar, 2018	T. King



FIT (SHEET 3 - ITEM 19) BSL COIL SERIAL NUMBER HERE

△ 2 SOLDER USING LEAD FREE SILVER BEARING SOLDER [6 PLCS]

BUILD UP AREA AROUND TERMINALS

NOTES:
 △ 6 COILS ARE ROTATED 7.5° FROM EACH OTHER

DRAWN M. Duffy	DATE 15 Feb, 2018	DO NOT SCALE FROM DRAWING DIMENSIONS & TOLERANCES UNLESS OTHERWISE NOTED <table border="1"> <tr> <th>LINEAR</th> <th>INCHES</th> <th>mm</th> </tr> <tr> <td>X.XXX</td> <td>±0.005</td> <td>±0.03</td> </tr> <tr> <td>X.XX</td> <td>±0.01</td> <td>±0.1</td> </tr> <tr> <td>X.X</td> <td>±0.03</td> <td>±0.3</td> </tr> <tr> <td>X</td> <td>±0.06</td> <td>±1</td> </tr> <tr> <td>DEG.</td> <td>±0.5</td> <td>±0.5</td> </tr> <tr> <td>FINISH</td> <td>63</td> <td>1.6</td> </tr> </table>	LINEAR	INCHES	mm	X.XXX	±0.005	±0.03	X.XX	±0.01	±0.1	X.X	±0.03	±0.3	X	±0.06	±1	DEG.	±0.5	±0.5	FINISH	63	1.6	GMW Associates 955 Industrial Road, San Carlos, CA 94070 Tel: (650) 802-8292. Fax: (650) 802-8298 TITLE: 5405 - Coil Assembly Terminal Potting
LINEAR	INCHES		mm																					
X.XXX	±0.005		±0.03																					
X.XX	±0.01	±0.1																						
X.X	±0.03	±0.3																						
X	±0.06	±1																						
DEG.	±0.5	±0.5																						
FINISH	63	1.6																						
CHECKED T. King	DATE 6 Mar, 2018	SIZE A2	DWG NO. 11907-0451-0	REV. P1																				
ENGINEERING	DATE	SCALE: 1:2	MASS: 31.5 kg	SHEET: 2 OF 3																				

8 7 6 5 4 3 2 1